



Southwest Climate  
Adaptation Science Center

# EcoClimate News Southwest

Summer 2024



---

Follow our Instagram account, [@southwestcasc](#)! We post our latest news, blog, and podcasts about adaptation issues of the present and future.

Collaborative Pathways: Indigenous Wisdom Leading Climate Adaptation Efforts in California



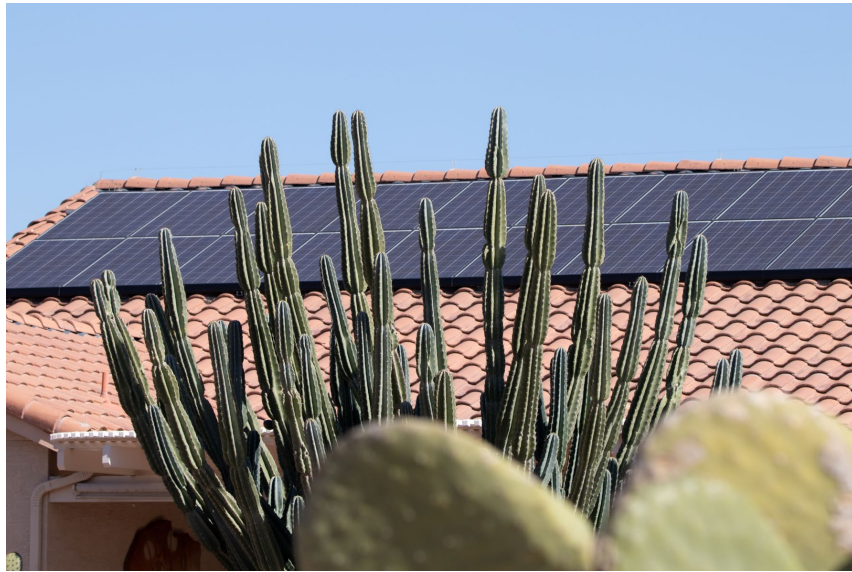
Photo provided by: California Department of Water Resources

"Collaborative Pathways: Indigenous Wisdom Leading Climate Adaptation Efforts in California" examines how a climate justice approach to climate change adaptation can positively impact issues such as community members' needs and food security, as well as strengthening community ties.

[Read Here!](#)



Come Rain or Shine Podcast



In this episode, "Agrovoltaics: Producing Food and Energy in the Same Place," Come Rain or Shine delves into the fascinating intersection between agriculture and solar energy. Listen to insights from two experts, Dr. Greg Barron-Gafford from the University of Arizona and Dr. Brandon Bestelmeyer, research leader at the Jornada Experimental Range, to learn more about how this technology could potentially shape the future of energy, food production, and water systems.

[Listen Here!](#)

---

## US Indigenous Data Sovereignty Summit

Some of our team members were able to attend the US Indigenous Data Sovereignty Summit! With 450 attendees, this proved to be a great opportunity to learn about how Indigenous people can determine the future through the use of data. This conference brought together Indigenous leaders, community programs, academics, policy experts, and other data actors and rights holders.



Photo provided by: Lydia Jennings, Ph.D. Arizona State University, Duke University

Read More!

## Partner News

### Grass-Cast Forage Forecast

Grass-Cast is a rangeland forage productivity forecast that indicates whether productivity is likely to be above-normal, near-normal, or below-normal in the upcoming growing season relative to the 30+ year history of the local area. This new experimental grassland forecast is the result of a collaboration between Colorado State University, U.S. Department of Agriculture (USDA), the National Drought Mitigation Center at the University of Nebraska-Lincoln, and the University of Arizona.

The first set of maps are published in the spring (typically late April) and then updated every two weeks throughout the growing season with newly observed weather data. Forecasts are available for the Great Plains, Arizona, and New Mexico. Visit the [Grass-Cast website](#) to learn more and consult the current maps for your area.

[Learn More!](#)

---

## Natural Resources Workforce Development Fellows (NRWD)

### Entering the Co-production World is Harder than it Looks



This blog post by Leah Madison (2024–2025) discusses the difficulties surrounding working with teammates and trust. Read more to learn about this fellowship allowed her to craft skills in the cooperative environment, leading to a synthesis from researchers of all skill types.

[Read More!](#)

---

### From Fellows to Teammates: The Development of Fellow Cohesion through Team Science Trainings



This blog post, written by Lauren Lad (2024–2025) follows the journey of this PhD student through team building, cohesion, and leadership skills. Read to learn more about how the fellowship helped her communicate with people of different backgrounds and skill sets.

[Read More!](#)

---

### Fellows Follow-Up Benjamin Davis (2020–2021)



Benjamin Davis is currently a researcher at the Monterey Bay Aquarium Research Institute (MBARI) in Moss Landing, CA. He is working to better understand the biogeochemical processes of the ocean using the [GO-BGC/SOCCOM](#) float array. Benjamin is part of the [Chemical Sensor Team](#) at MBAR that is constructing and calibrating these sensors to increase the accuracy of the publicly available data.

---

Contact us at:

University of Arizona, ENR2 Building, 1064 E. Lowell St., Suite N441, Tucson, AZ 85721  
Anita Govert, Assistant University Director, [agovert@arizona.edu](mailto:agovert@arizona.edu)

Want to change how you receive these emails?

You can [update your preferences](#) or [unsubscribe from this list](#).

*Copyright © 2023 Southwest Climate Adaptation Science Center | All rights reserved.*

[Subscribe to EcoClimate News Southwest](#)

