



Mattias Amezquita-Fox <amezquitafox@email.arizona.edu>

[EcoClimate News SW] Happy International Women in Science Day!

1 message

SW Climate Adaptation Science Center <sary21@email.arizona.edu>
Reply-To: SW Climate Adaptation Science Center <sary21@email.arizona.edu>
To: amezquitafox@email.arizona.edu

Tue, Feb 11, 2020 at 1:26 PM

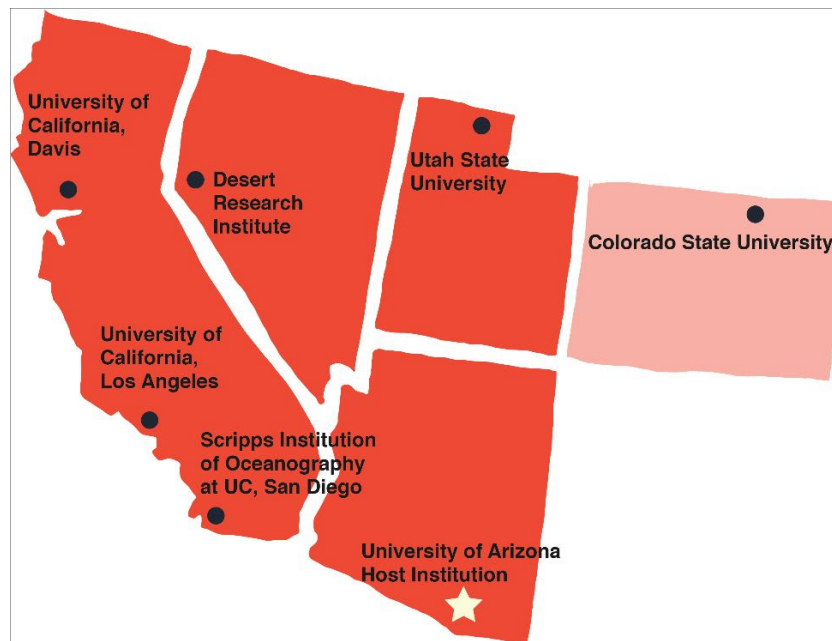
[View this email in your browser](#)



EcoClimate News Southwest

February 2020

**Applications are now open for the SW
CASC Natural Resources Workforce
Development Fellowship**



The Southwest Climate Adaptation Science Center (SW CASC) Natural Resources Workforce Development (NRWD) Fellowship was developed to provide graduate students with opportunities for training and practice in developing use-inspired and actionable science to inform natural resource management decisions. Those selected will make up a team of 8 scientists, working together over the course of twelve months.

One applicant from each of the seven SW CASC consortium institutions (see map) will be selected to take part in the 2020-2021 fellowship cohort. We encourage broad participation from students who identify with groups that have been traditionally underrepresented in the government and academic workforce.

Funding for successful applicants includes a stipend of \$5,000, with an additional travel allowance of \$1000 for each cohort meeting that occurs away from their home campus.

Please find the application [here](#) and distribution materials [here](#).

**Happy International Women in Science Day:
Celebrating the Women Scientists at the SW
CASC**



According to the United Nations less than 30% of researchers around the world are women, despite women making up about half of the global population. In order to combat negative stereotypes and biases that prevent women from entering science fields, the United Nations has declared February 11th the International Day of Women and Girls in Science. Here at the SW CASC, we value our women scientists and have invited them to say a few words about some of their experiences related to being a woman in science. [Here is what they have to say.](#)

SW CASC Podcast

The SW CASC will be relaunching our podcast, EcoCast Southwest, this spring! Are you a researcher or resource management practitioner who would like to be considered for a guest spot? What topics would you like for us to discuss? Let us know [here](#)!

Recently Published Research

[Effects of Elevated Sea Levels and Waves on Southern California Estuaries During the 2015 - 2016 El Niño](#)

SW CASC funded graduate student, Madeleine Harvey, led this study which examines how the 2015-2016 El Niño flooding and storm event impacted estuaries in Southern California. The study found that elevated ocean waters caused raised water levels and prolonged inundation in estuaries. This research will be relevant for managers developing adaptation strategies for estuaries that experience increased sea levels and waves.

Fellows' Highlights

Navigating Research as A Cohort



Drew Eppehimer is a PhD student in the School of Natural Resources and the Environment at the University of Arizona. Below are his experiences and insights as a SW CASC Natural Resources Workforce Development (NRWD) Fellow.

We live in a time of global change in which environmental issues are becoming increasingly evident. These issues are a culmination of complex and evolving interactions between organisms and their environment including human dimensions such as political, economic, and social realities/perceptions. Likewise, solutions to these environmental issues are complex, evolving, and multidisciplinary. This is important for all fields of study including my own dissertation research at the University of Arizona. I study stream ecology, specifically aquatic invertebrates in desert rivers that are fed by treated wastewater. The long-range goal of my research is to assess the potential of treated wastewater to support aquatic ecosystems to help buffer the impacts of climate change and population growth on these aridland systems, while also understanding the limitations of this artificial flow. *Read the full blog post by SW CASC NRWD Fellow Drew Eppehimer [here](#).*

Partner Highlights

The 2020 Cohort of the Climate Assessment for the Southwest (CLIMAS) Environment and Society Fellows has been Announced

Congratulations to the 2020 cohort of **CLIMAS Environment and Society Fellows**: Emily Cooksey, JoRee LaFrance, Kunal Palawat, and Rachel Rosenbaum. The fellowship provides support to University of Arizona graduate students in any degree seeking program. Projects must be use-inspired and address the research and information needs of the students' project partners. Projects also connect social or physical sciences, the environment, and decision making.

The USDA Southwest Climate Hub and the New Mexico State University Climate Change Education Seminar Series

The USDA Southwest Climate Hub and Jornada Experimental Range were delighted to host Dr. Scott Hutchins, Deputy Under Secretary for Research, Education and Economics at the National Agricultural Research, Extension, Education and Economics Advisory Board meeting focused on Climate Adaptation. Board members attended the Hub-sponsored NMSU Climate Change Education Seminar Series presented by Dr. **Gary Nabhan**, prolific author and thought leader working on desert food systems and climate change resilience. Nabhan presented to more than 225 people about rediversifying desert food systems to increase community resilience in the face of climate change.

Partner Events

What might the future be for precision beef farming technologies?

Sustainable Southwest Beef
Heritage genetics and supply chain options and precision ranching

February 25th, 2020
Wooten Hall, Room 105
12:00 pm

Join the Zoom Meeting!
Meeting ID: 418 882 804
Password: 420488

One tap mobile:
+14086380968 418882804# US (San Jose)
+16699006833 418882804# US (San Jose)

Dial by your location:
+1 408 638 0968 US (San Jose)
+1 669 900 6833 US (San Jose)
+1 646 876 9923 US (New York)
Meeting ID: 418 882 804

https://zoom.us/j/418882804?pwd=V3lSUmlFWjJXNkVowVDVnaktXZl9HQT09

Tony Waterhouse
Tony Waterhouse is a livestock scientist with over 35 years' experience in the study of livestock systems and animal welfare in the UK. He is former head of the Hill and Mountain Research and the Beef and Sheep Research Centres at Scotland's Rural College (SRUC), and now holds an Eminent Fellowship at SRUC. Currently, his research is focusing on opportunities in wearable technology and precision livestock farming, with a recent focus on next generation animal telemetry using Internet of Things (IoT) communication with technologies capable of providing animal monitoring and animal management in real-time. He led the team that built, commissioned and used the award-winning (GreenGown Award 2019) GreenCow facility for measuring livestock emissions alongside large-scale feed intake facilities, and led SRUC's team working within livestock emissions project as part of the UK's Agricultural GHG Research Platform project (<https://ghgplatform.org.uk/>). Tony has wide experience of precision farming systems, being farm director for SRUC's upland farms for over 20 years, involving management of 3,500 hectares, 250 breeding cows and 5,000 breeding ewes. He has traveled widely in Europe, China and South America, recently supervising a large number of visiting postgraduate students in partnership with Brazilian universities. He has been Chair and Vice-Chair of SRUC's Animal Welfare and Ethical Review Board.

Logos: SRUC, USDA, NMSU, and other partner organizations.

The USDA Southwest Climate Hub joined other members of the **Sustainable Southwest Beef Project** to introduce **heritage genetics**, **supply chain options** and **precision ranching** to 100+ producers at the Southwest Beef Symposium in Amarillo, TX. The project will host a presentation and webinar featuring Dr. Tony Waterhouse of Scotland's Rural College on: **What might the future be for precision beef farming technologies?**

February 25, 2020, noon
New Mexico State University Campus
Wooton Hall, Room 105
Las Cruces, New Mexico

Join remotely [here](#)
Meeting ID: 418 882 804
Password: 420488
Audio: +1 646 876 9923
Zoom: <https://buff.ly/2HbLp0n>

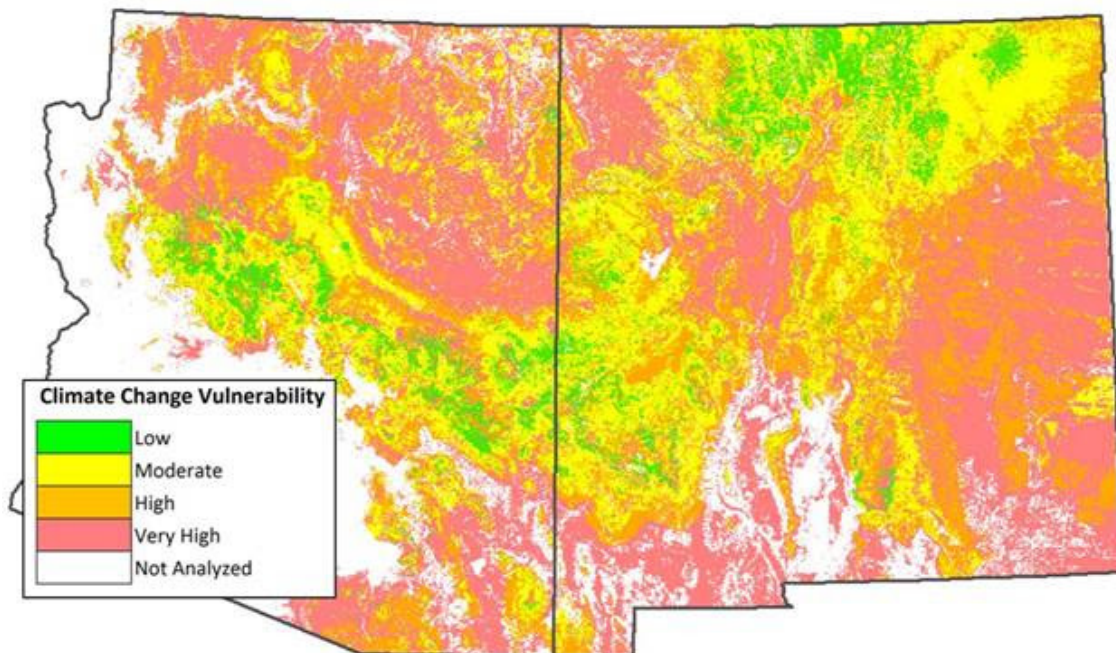
Other SW Science

Utah Roadmap

In Utah, there has been no climate change planning or even mention of climate change in state level government since 2008 when Jon Huntsman was governor. Last year the Utah State Legislature appropriated \$150K for a policy institute at the University of Utah to conduct a science policy study and to provide policy recommendations on the linked topics of air quality and climate change. A draft of this report, the Utah Roadmap, was released a few weeks ago.

Using Climate Projections to Assess Ecosystem Vulnerability at Scales Relevant to Managers

This study indicates that most lands in Arizona and New Mexico appear vulnerable to a changing climate, though the degree of vulnerability varies by location and the type of vegetation. Key relationships were found between vulnerability projections and important ongoing processes of species migration and wildlife severity.



Influence of Arctic Sea-Ice Variability on Pacific Trade Winds

Scientists at Scripps Institution of Oceanography at UC San Diego used computer models and historical data to show that the rapid melting of Arctic sea ice is the

major driver of extreme weather events over the Pacific ocean, including the extreme atmospheric rivers that impact the West Coast of the United States.

Flood Size Increases Nonlinearly Across the Western United States in Response to Lower Snow-Precipitation Ratios

Historically, many mountainous regions in the United States experience high levels of precipitation as snow fall. However, as the world continues to warm, much of this precipitation is instead falling as rain which leads to increased flood sizes. This research will be important for managers, especially those in the western United States where the impacts of larger floods may be significant.

Patterns and Drivers of Atmospheric River Precipitation and Hydrologic Impacts Across the Western United States

Atmospheric Rivers (ARs) are not a new phenomena, however, in recent years researchers have begun paying more and more attention to them as the intensity and frequency of ARs increases. Christine Albano, a past SW CASC graduate student, led a study examining historical data of what happened to the precipitation from ARs when it hit the ground. How much became snow, immediately ran off, or was added to the soil moisture?

Job and Funding Opportunities

Funding Opportunities

The Bureau of Indian Affairs is Accepting Proposals for Funding through the Tribal Resilience Program

The Bureau of Indian Affairs Tribal Resilience Program provides funding to Tribes, Tribal consortia, and authorized Tribal organizations to build capacity and resilience to climate change. Support will be provided through competitive awards for leadership engagement, adaptation planning, vulnerability assessments, and other programs.

DEADLINE - March 2nd, 2020

Job Opportunities

Membership and Engagement Officer

Water Education Colorado is seeking a membership and engagement officer. This position's responsibilities include communicating with, engaging and growing the organizations membership base, recruiting and expanding participation and financial support for programs, and increasing the organization's visibility in the community,

DEADLINE - February 12th, 2020

GIS Specialist

Friends of the Verde River is seeking a GIS specialist to provide support to the Habitat Restoration Program, specifically through building and maintaining databases, analyzing data,

*DEADLINE - Position open until filled***Water Resource Manager**

The Arizona Department of Water Resources is seeking a water resources manager. The successful applicant responsibilities include supervising and training staff, representing ADWR at public meetings and conferences, developing, organizing, and the dissemination of policies, procedures, and training materials.

*DEADLINE - Position open until filled***Post Doctoral Position**

The USGS North Central Climate Adaptation Science Center (NC CASC) is hiring a Postdoctoral Scholar in Understanding and Managing Changing Wildfire Risk to lead an effort on generating the fire science needed for resource management decisions in the ecosystems of the North Central region.

*DEADLINE - Position open until filled***Student Funding Opportunities****Institute for Tribal Environmental Professionals 2020 Student Summer Internship**

An 8-week program for Native American/Alaskan Native students to work with tribal organizations to address tribal environmental issues. Both undergraduates and graduate students enrolled in a full-time degree program can apply.

*DEADLINE - February 28th, 2020***University of Arizona/NASA Space Grant**

The University of Arizona (UA) Space Grant committee is currently accepting applications for their AY20/21 cohort. All graduate students at the University of Arizona are eligible to apply. The fellowship, co-sponsored by UA/NASA Space Grant, the UA Graduate College, and the applicant's nominating Department/College, includes a stipend of \$16,000 for one or two years, both in- and out-of-state fee/tuition waivers, student health insurance (if needed), and \$750/year for travel to professional meetings.

*DEADLINE - March 23rd, 2020***Contact us at:**

University of Arizona, ENR2 Building, 1064 E. Lowell St., Suite N441, Tucson, AZ 85721

Want to change how you receive these emails?

You can [update your preferences](#) or [unsubscribe from this list](#).

Copyright © 2020 Southwest Climate Adaptation Science Center | All rights reserved.



Subscribe to EcoClimate News Southwest

